

# INTERNET TECHNOLOGY

## SHARED SERVICES PROGRAM



IT'S YOUR IT  
OWN IT

## ANNUAL MAINTENANCE PACKAGE

Ensuring your credit union has a secure computer network system is extremely important to your member's financial safety. Georgia Credit Union Service Corporation's Shared Internet Technology Services can assist you with improving the efficiency and security of your information technology assets. We can identify and assess existing and/or potential security control risks and weaknesses facing your organization.



### Monthly Maintenance of IT Shop:

- ✓ Patching
- ✓ Updates
- ✓ Anti-Virus Scan
- ✓ Network Backup of Files
- ✓ Network Design
- ✓ Security and Firewalls

*"We have been using the IT Services of GCUA for almost 15 years. It is nice knowing that our computer operations are being monitored and kept up-to-date. Because IT Services is part of GCUA, they understand credit union operations and our philosophy. They have our best interests at heart and this means a lot for our credit union."*

**-Keith Pritchard, CEO  
Georgia Florida United Methodist FCU**

## VULNERABILITY ASSESSMENTS

Be certain your system is compliant and meets federal regulations by partnering with our IT Services Department to get your credit union on the right track. Keeping up with regulations and implementing them can be a significant strain on IT, compliance personnel and management. We administer compliance by reducing threats and protecting data from loss and theft.

Our IT department uses **Nessus** to assess internal and external networks for vulnerabilities. Nessus features high-speed discovery, configuration, auditing, asset profiling, sensitive data discovery and vulnerability analysis of your security posture.

**Internal Vulnerability Assessments:** While network penetration services are designed to assess your external security posture, the internal penetration addresses your security posture relative to two primary scenarios: an external intruder breaches perimeter defenses, or a malicious insider attempts to access or damage sensitive information or IT resources. We provide reporting on vulnerabilities of your network system to assist you in creating a strategy plan.

**External Vulnerability Assessments:** An external vulnerability assessment identifies vulnerabilities from outside the network that could allow denial-of-service attacks or unauthorized access. Our report enables your credit union to mitigate vulnerabilities and develop a project plan and attack strategy on how to move forward with the remediation.

## COMPLIANCE REMEDIATION

GCUS will provide your organization with solutions to address vulnerabilities found in the External and Internal Vulnerability Assessments:

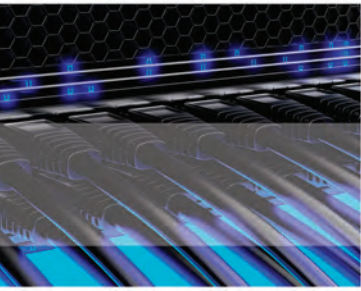
- Address threats, including firewall intrusion detection and prevention
- External and internal vulnerability management
- Web content filtering
- Security information
- Reporting



## OTHER SERVICES

Our professional and affordable IT staff is dedicated to helping credit unions of all sizes and is available whenever you need them. Information security requires ongoing management and monitoring to ensure credit union members' data remains protected from both internal and external threats. A few services we offer are:

- Virtualization
- Disaster Recovery (Planning & Implementation)
- Board Packet Delivery (such as iPads)
- IT Compliance
- Cloud Computing
- Secure Data Backups
- Disaster Recovery
- Network Support



## IT Services Benefits

- Provide quality, dependable and affordable services
- Maintain valuable relationships
- Implement a continuous improvement approach to service quality
- Ensure IT services exceed the needs of credit unions
- Report vulnerabilities to board and steps to remediate them



Discuss and simplify your Internet  
Technology needs today!

GEORGIA CREDIT UNION

*Affiliates*

6705 Sugarloaf Parkway, Ste 200  
Duluth, GA 30097  
(800) 768-4282, ext. 3405  
barryh@gcua.org  
www.gcua.org